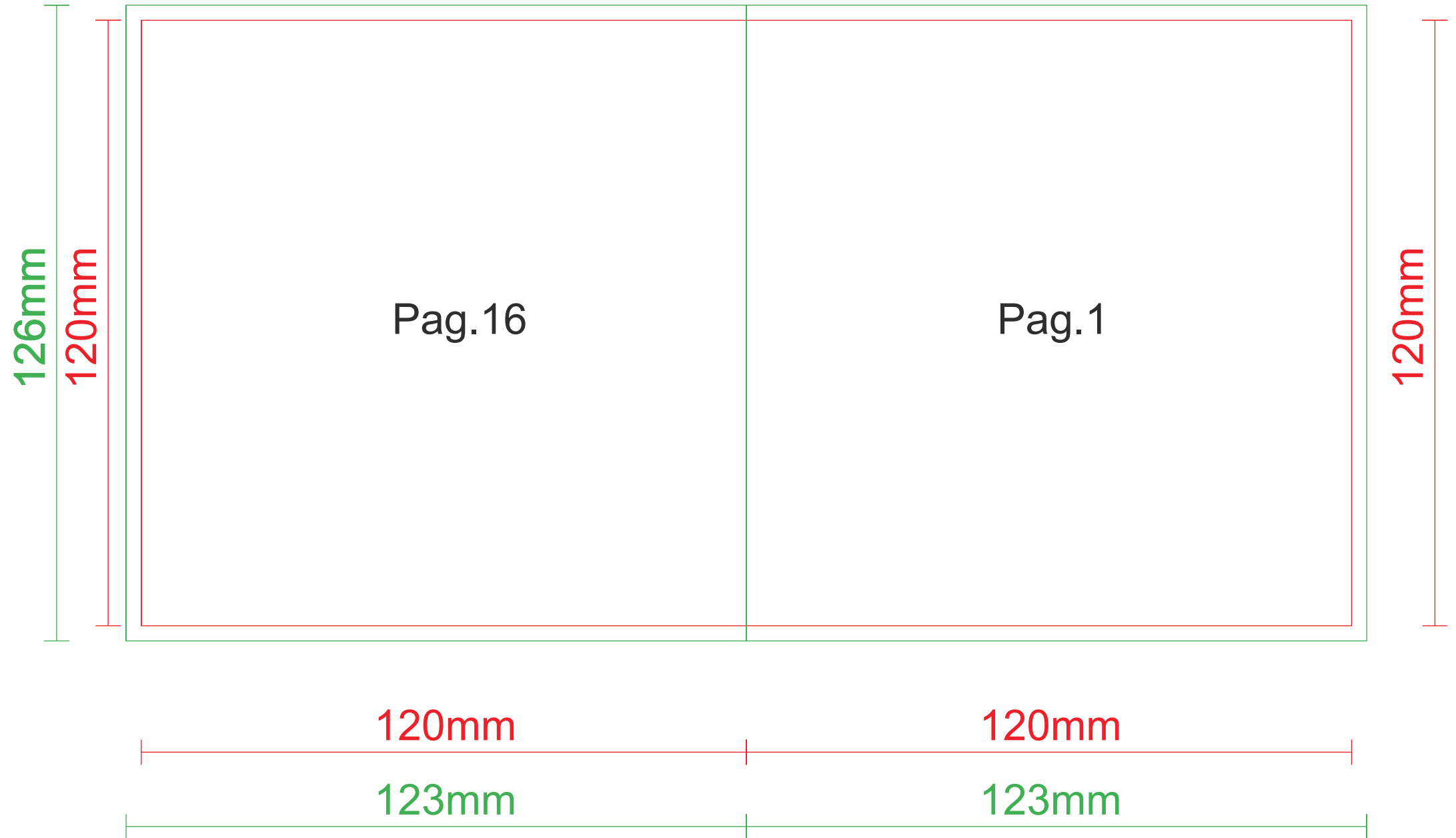


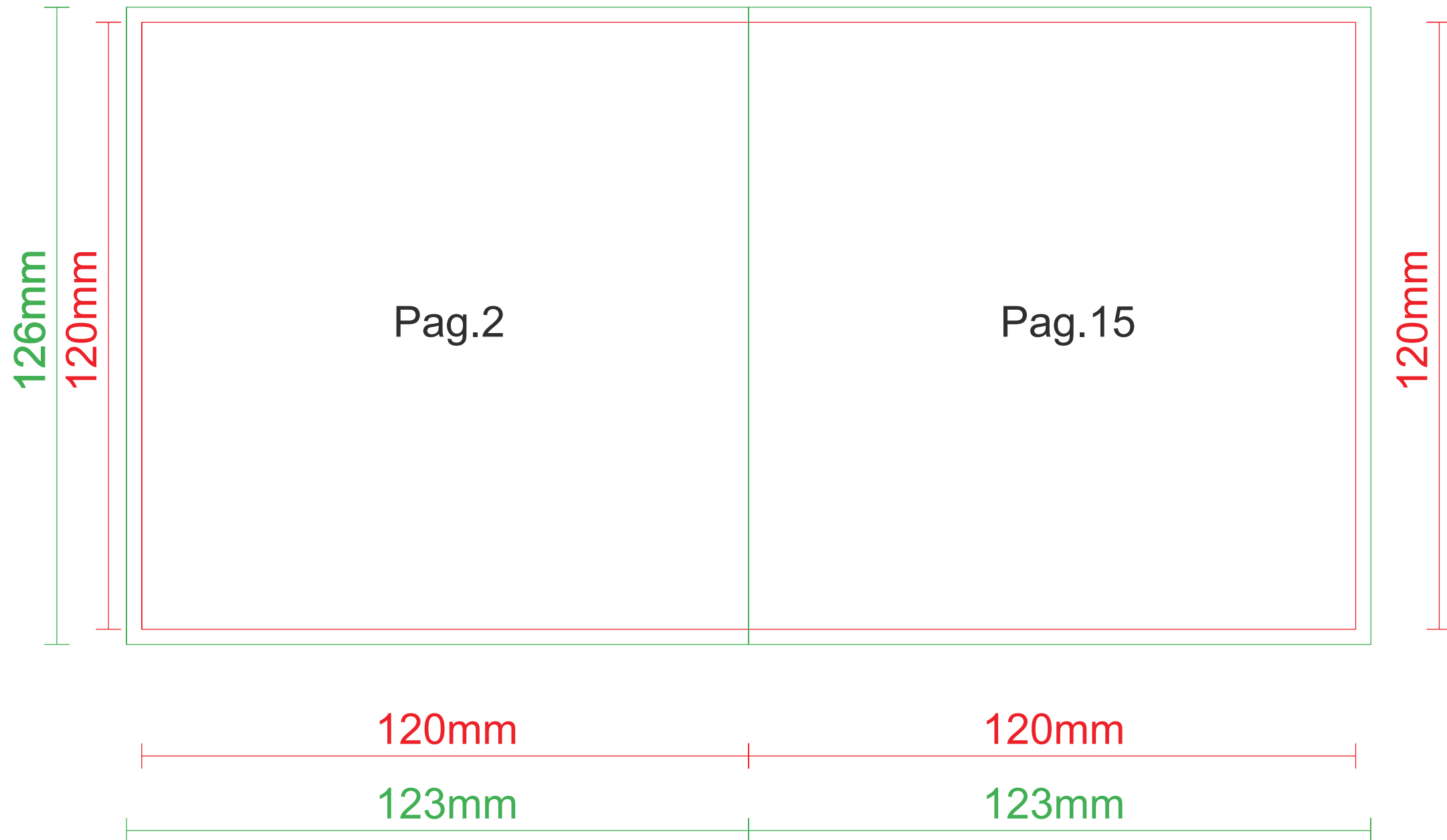
— delimita le abbondanze

— delimita il taglio



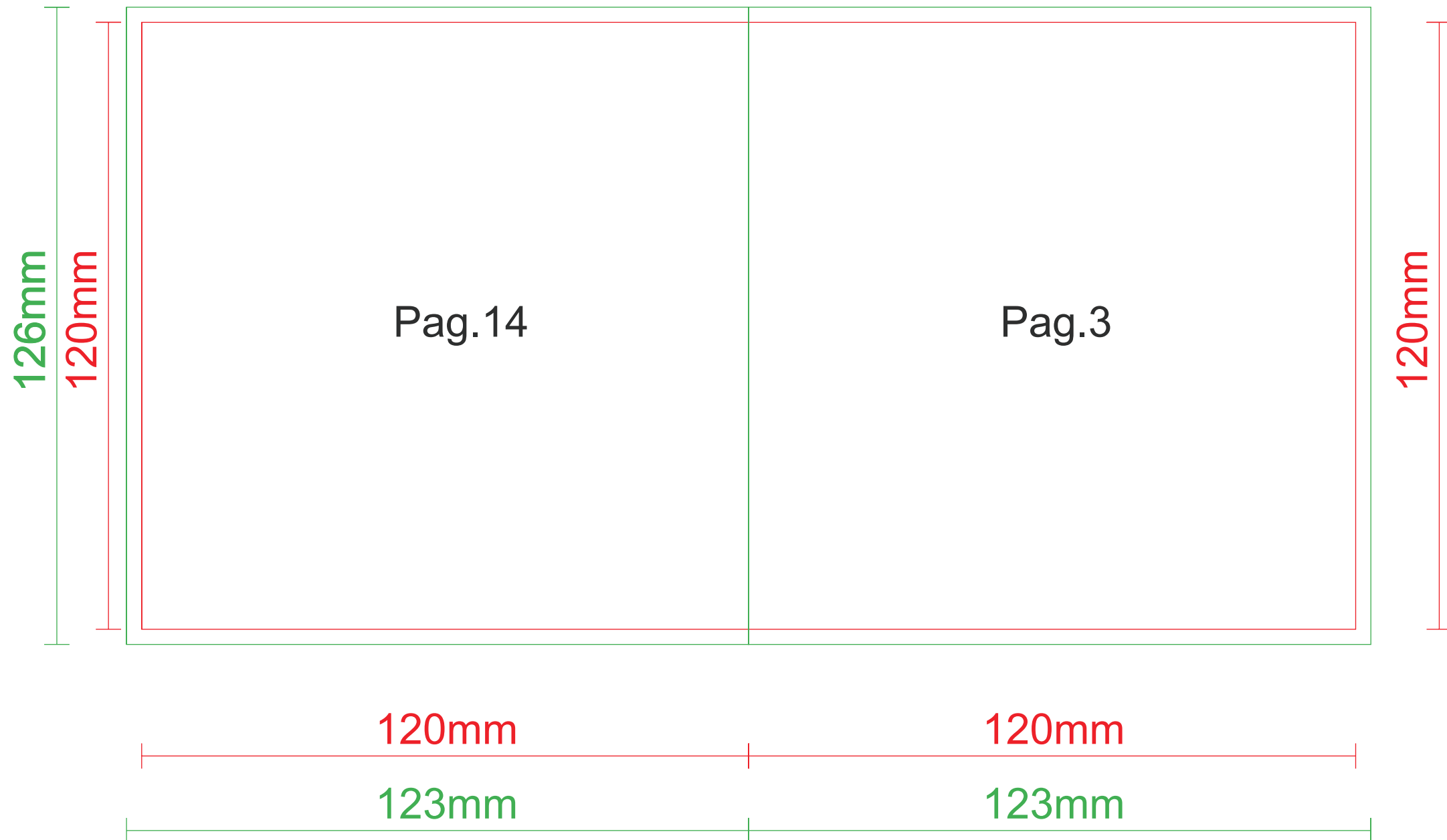
— delimita le abbondanze

— delimita il taglio



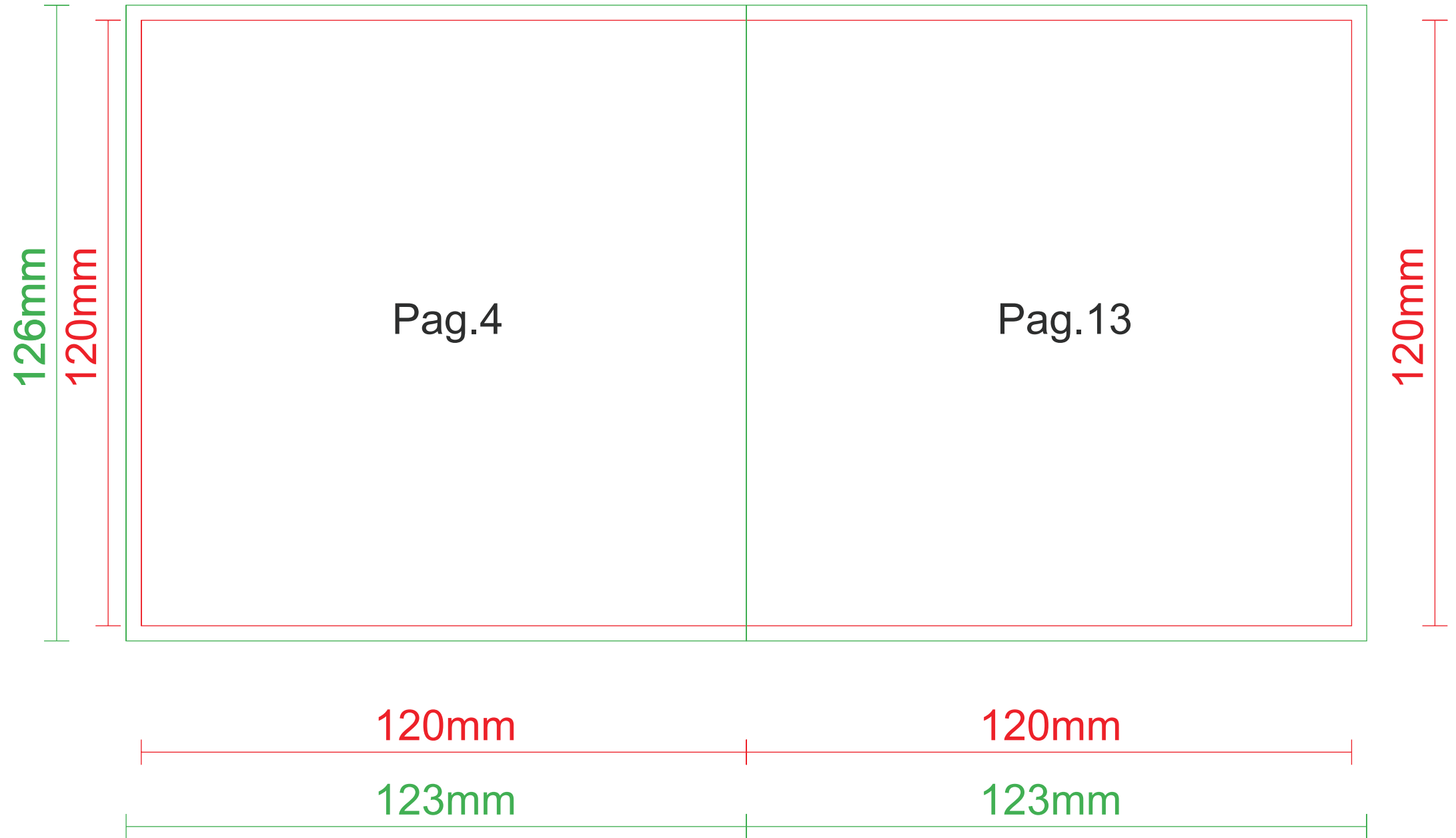
— delimita le abbondanze

— delimita il taglio



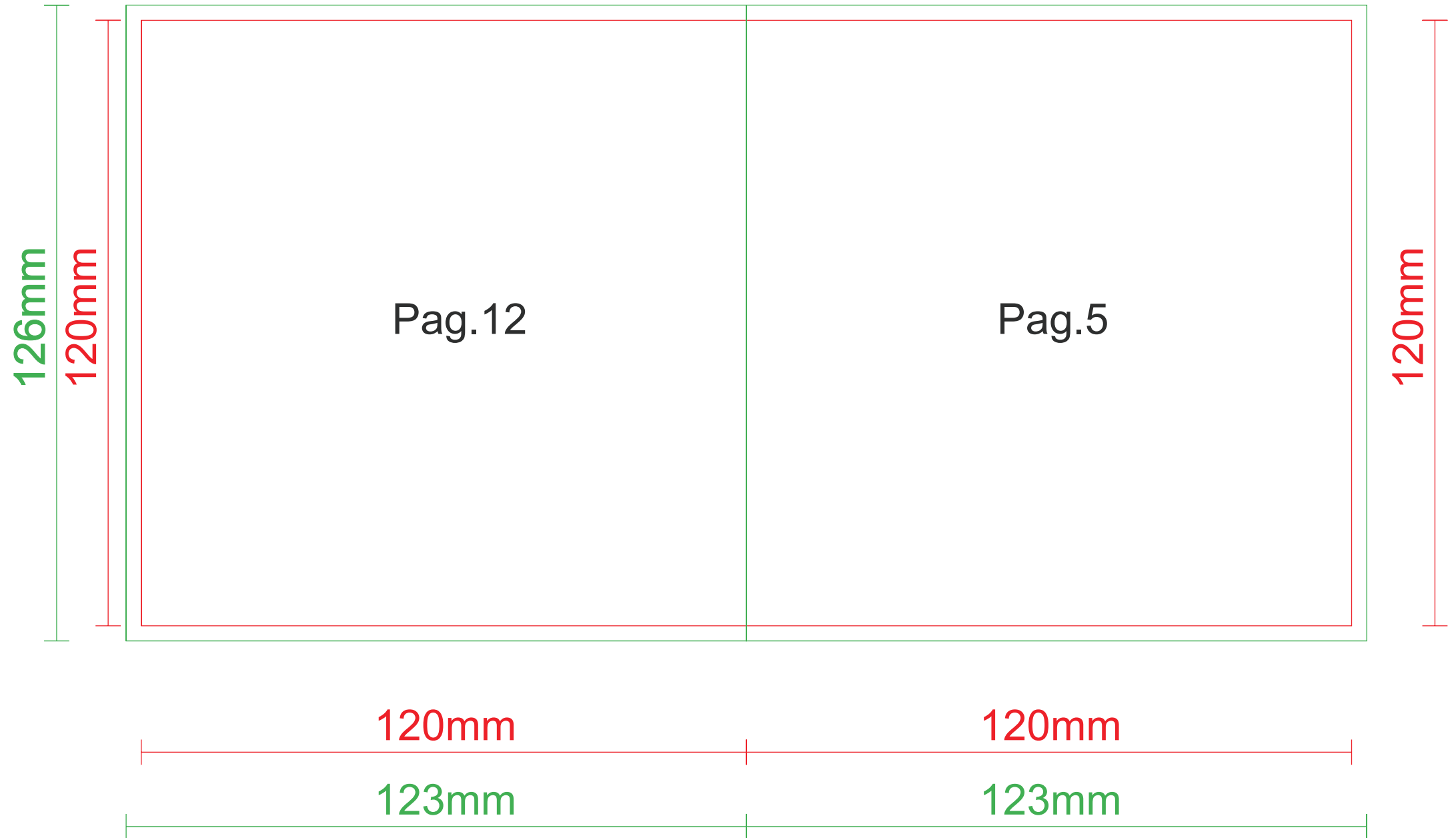
— delimita le abbondanze

— delimita il taglio



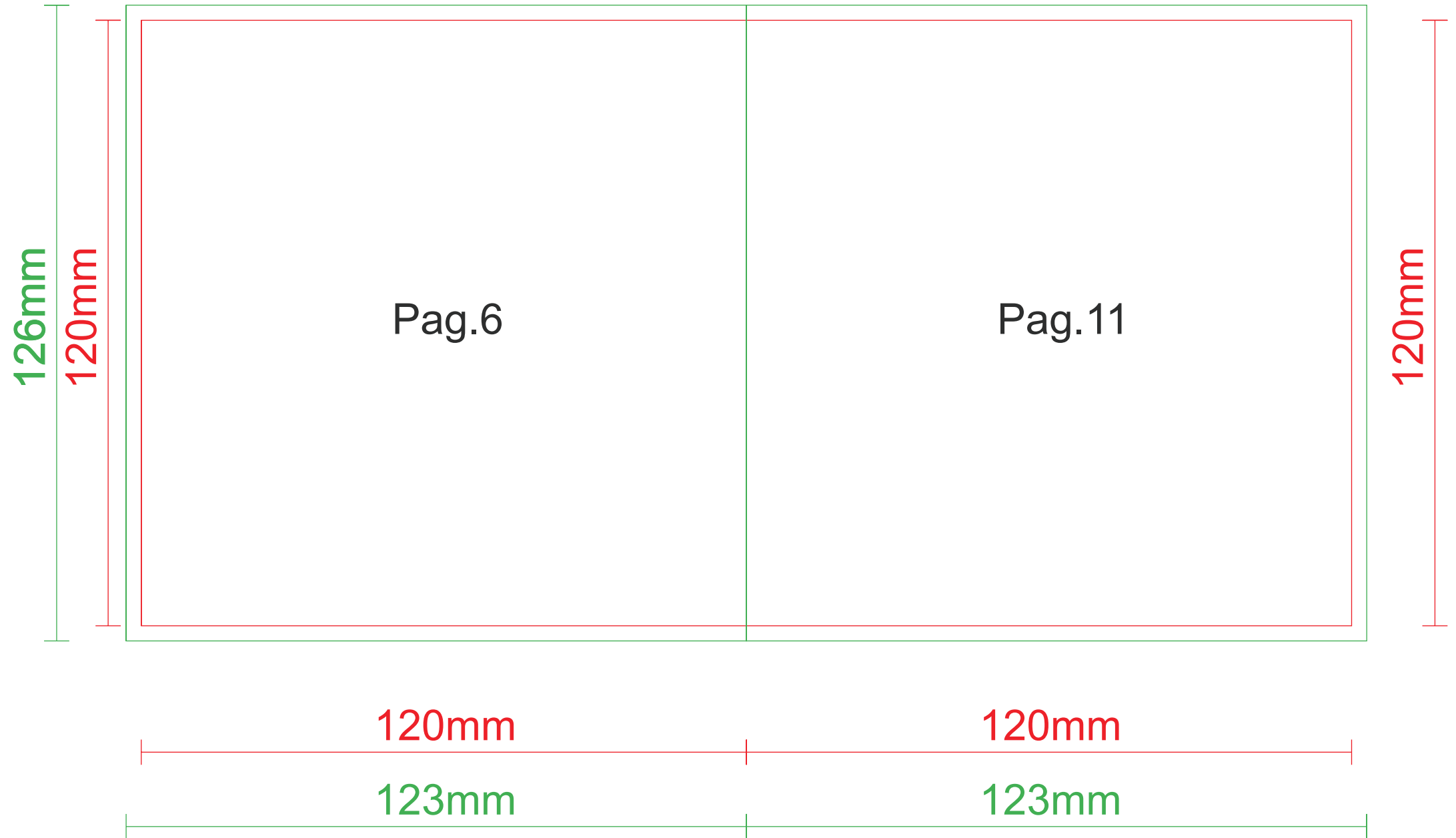
— delimita le abbondanze

— delimita il taglio



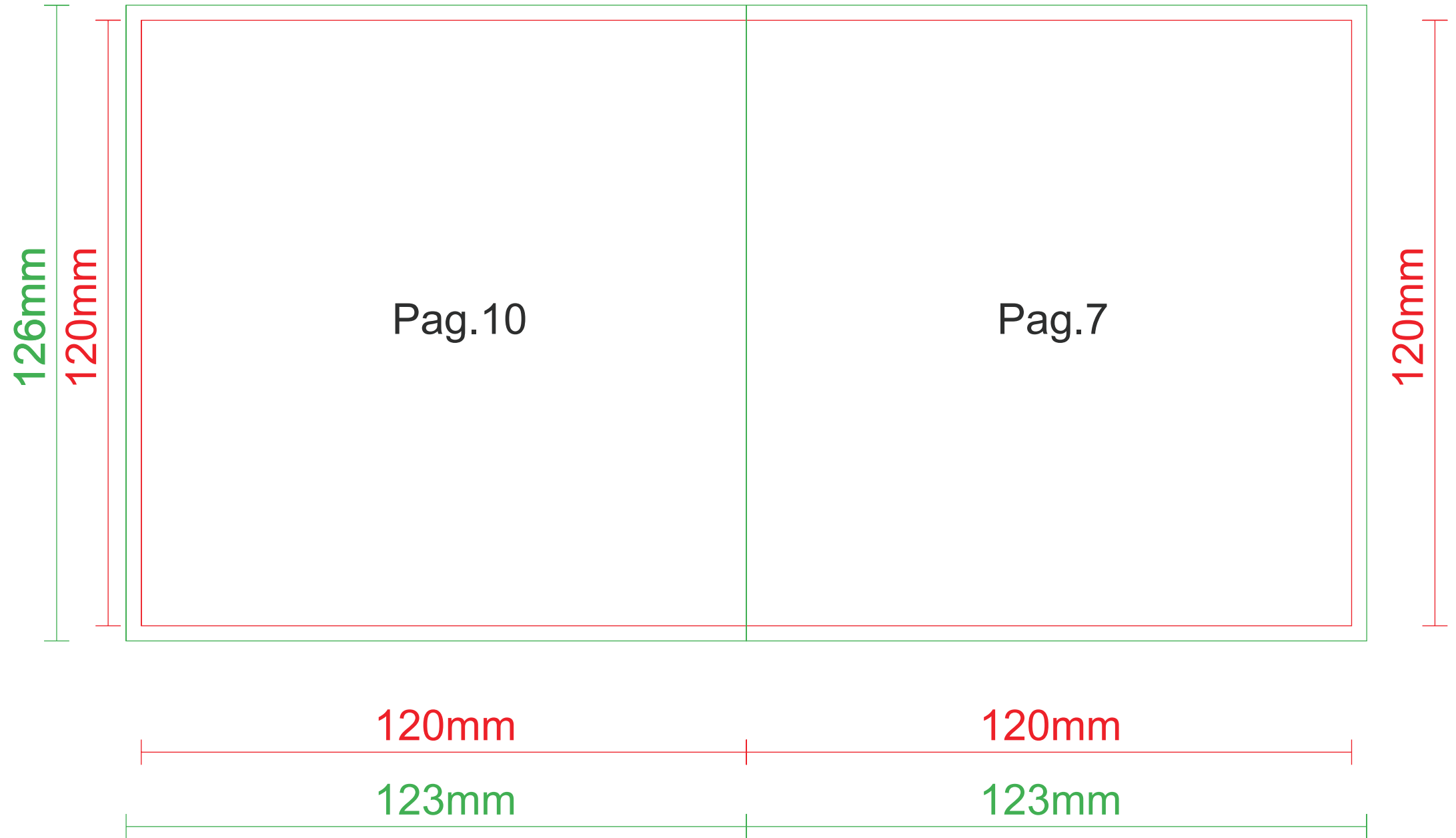
— delimita le abbondanze

— delimita il taglio



— delimita le abbondanze

— delimita il taglio



delimita le abbondanze

delimita il taglio

